

# SAUTER GMBH



# SAUTER GMBH

## Product world

Automate

**S**-mix

**S**-load

Networking

**S**-web

**S**-cloud

Expand

**S**-work

**S**-cons

**S**-visco

**S**-view

**S**-api

Administrate

**S**-plan

**S**-bill

**S**-lab

**S**-scale

**S**-sign

Complete

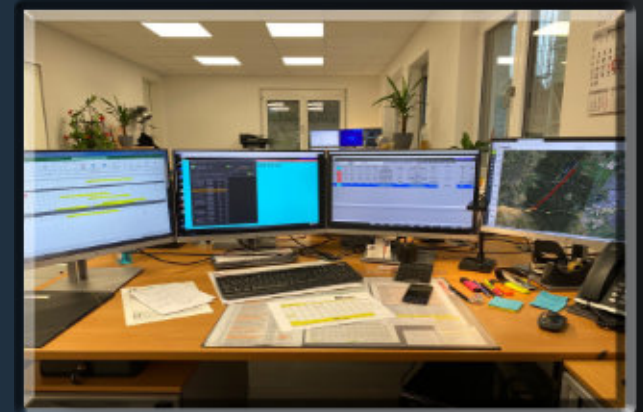
**S**-track

**S**-edoc

**S**-lab+

**S**-scale+

**S**-companion



As one of the leading suppliers of control systems in automation technology, we have been there for our customers since 1972.

With this wide range of services, we ensure quality solutions in the concrete industry.

From planning and software development to complete installation, our customers receive all services from a single competent source.

Many successful companies around the world rely on us and our services.



The logo for s-mix, featuring a stylized blue 's' followed by the word 'mix' in red.

# Precast concrete

Our fully automatic control solutions are completely integrated and customized to your requirements.

They enable customer-oriented optimization of your mixing and dosing systems.

This makes your concrete production more efficient and more powerful.





## Key functions :

- intuitive operation
- process visualization of your entire system
- operating modes automatic – semi-automatic – manual
- control solution for small and large systems
- customized project solutions
- production monitoring and analysis
- retrofitting of all system types (modular)
- water dosing with **S-visco**
- precise mixer moisture, bulk solids moisture, temperature & density measurement with **S-sensors**
- networking with other applications from the **S-synergy** portfolio
- integration of complex bucket conveyor control systems
- connection to a variety of external systems such as: alcemy, Sonocrete etc.
- machine learning and AI connections





# Ready-mix concrete

Our customized software for ready-mix concrete mixing plants optimizes your production through fully automatic control.

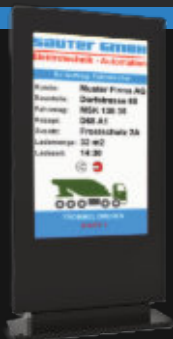
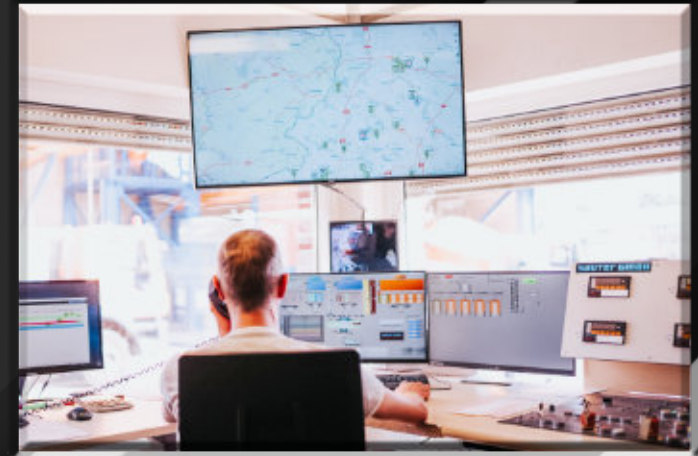
You can control your mixing and dosing systems efficiently and error-free, reduce costs and ensure the highest quality.

Rely on a future-proof solution for your concrete production.



## Key functions :

- intuitive operation
- process visualization of your entire system
- operating modes automatic – semi-automatic – manual
- mixing plant control (calibratable)
- process optimization through freely accessible parameter levels
- simple controls for small and mobile systems
- complex controls for large systems with multiple mixers
- customized project solutions
- production monitoring
- programme modules – feed control, cement blow-in
- retrofitting of all system types (modular)
- consistency measurement and control with **S-cons**
- water dosing with **S-visco**
- precise humidity, temperature and density measurement with **S-sensors**
- networking with other applications from the **S-synergy** portfolio
- connection to a variety of external systems such as:  
alcemy, sonocrete and well-known scheduling, invoicing and fibu systems
- machine learning and AI connections



### **S-view** Drive-through display

- truck loading and status display
- loading progress
- driver information
- transport address
- QR Code scan for the paperless delivery note

Ideal addition for a more efficient and smooth loading process



**S-sensors**

# Moisture measurement



We are setting new standards with our outstanding bulk solids moisture measurement.

With precisely selected sensors and exceptional software tools that ensure maximum performance and precision in your processes.



- online measurement and control
- sand-water correction
- live diagram flow/moisture
- two/multi-point calibration



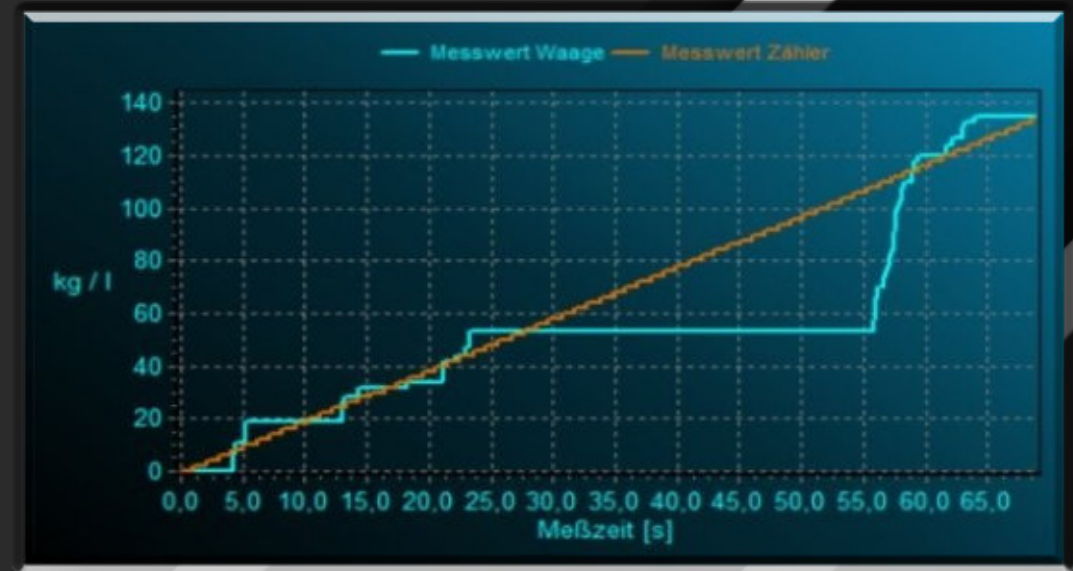
# **S**-sensors

## Density measurement

Our density measurement in recycled water combines advanced analytics and precise calculations in the software with latest light absorption technology.

In this way, we ensure outstanding process accuracy and efficient concrete production at the highest quality level.

- water correction
- fine fraction correction
- dynamic real-time control
- density-dependent water control



# **S-load** Loading control system



Avoid costly delays when loading bulk goods and rely on our intelligent loading control system.

Optimize your processes, increase efficiency and ensure smooth, economical loading – for maximum productivity in every application.

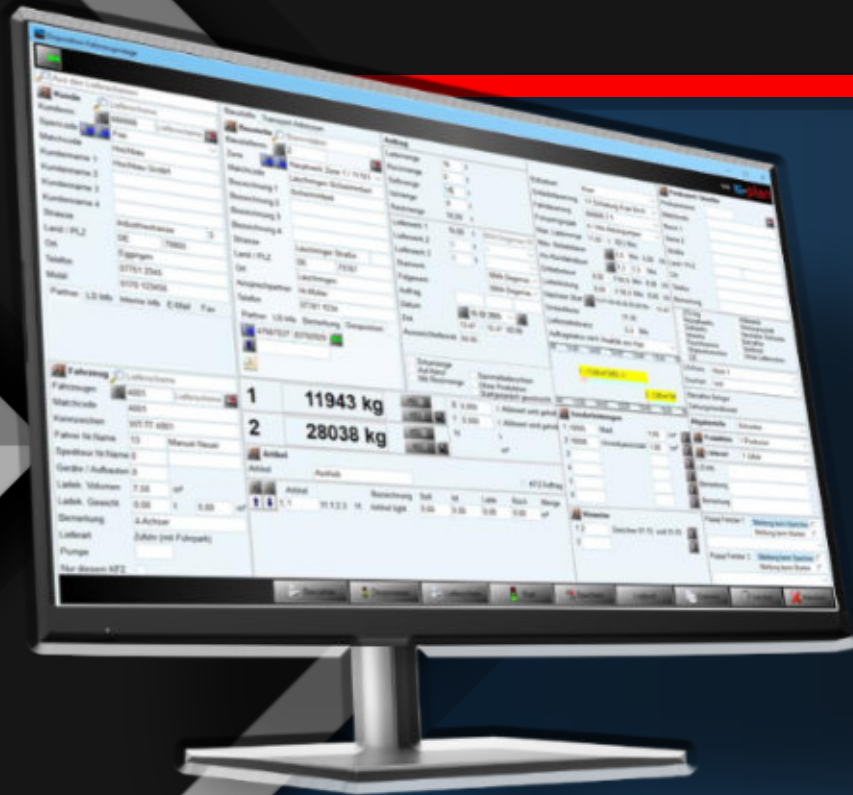
## Key functions :

- fully automated and unmanned loading 24/7
- QR scanner
- loading terminals with HMI and QR code scanner and card readers
- print terminals
- quick start function for standard quantities and standard recipes (with 3 clicks)
- delivery note printer
- collective delivery note
- recognition of vehicle number plates
- intercom systems
- truck tipper loading
- railway wagon loading
- loading for winter road maintenance
- pearl gravel loading
- ship loading





# **S-scale** Vehicle scales



With our **S-scale** vehicle scale software, we enable precise weight recording and simple transaction processing.

Supplemented by a Sauter standalone terminal that can be seamlessly integrated into **S-scale**, the weighing process is automated without an operator.

Improve the efficiency and transparency of your logistics processes. Everything is fast, reliable and user-friendly!

## Key functions :

- weighbridge management
- embedded solution as part of the **S-plan** for complex processes
- stand-alone solution
- unmanned weighing
- entry and exit terminals with HMI and print terminals
- printer terminals
- card management
- weighing ticket and delivery note printing
- barcode / QR-code
- cargo documentation through image archiving
- cash sale
- traffic light and barrier control
- connection to **S-sign**
- communication with external legal-for-trade scale analysers, e.g: Höflmeyer, Pfister, Dini Argeo, Pari, Systec
- communication with external vehicle identification systems (camera)
- image archiving for the process



# S-work

## Second workstation and visu-splitting



With S-work, the additional client workstation, you always have your production in view and data records under control.

Thanks to additional workstations for operation, display, master data maintenance and statistical analyses, without interrupting the mixing and dosing process.



## Key functions :

- operator terminals for plant employees
- disposition
- processing
- operations manager / production manager
- technology / maintenance
- display monitors for drivers in break rooms and waiting areas
- hall monitors for production planning and demand display in factory concrete plants



# s-plan Disposition



s-plan disposition is the right choice for the internal distribution of tasks and resources and is indispensable for company organisation.

## Key functions :

- order-disposition
  - concrete with pump disposition
  - transport / vehicle fleet / vehicles / equipment and constructions
  - troughs
  - weighbridge
  - mobile wheel loader
  - general cargo, building materials trade/material disposition
  - cement transport
  - bitumen
  - deliveries / self-service terminal
- central and plant disposition
- order and production overview
- plant utilization and resource managers
- paperless / digital delivery note
- can be supplemented by the **S-web** web portal and the **S-edoc** app
- QR-code, card management
- process-related image archiving for the delivery note





# **s-lab** Concrete laboratory



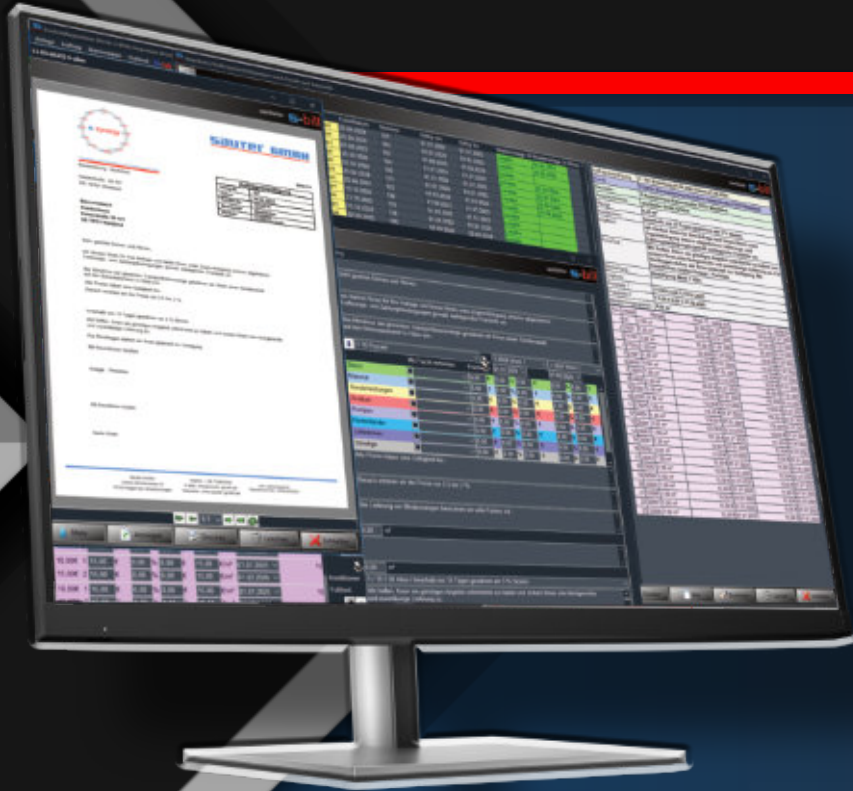
The **s-lab** concrete laboratory software from Sauter GmbH is a permanent fixture on the quality assurance market in the concrete industry.

## Key functions :

- raw materials management
- test plan and declaration of conformity calculator
- list of properties
- construction site supervision (B2)
- recipe sieve lines with optimization
- recipe calculations with standard-compliant assistance tools
- concrete families
- rock, fresh and hardened concrete testing
- residual water monitoring
- work diary, event protocol
- WPK – factory production control
- statistical analysis
- consideration of global european standards and country-specific user rules e.g. EN206, DIN1045-2, SIA-262
- construction site supervision (B2)
- free parameterization
- new DIN 1045:2023-08



# **S-bill** Invoicing



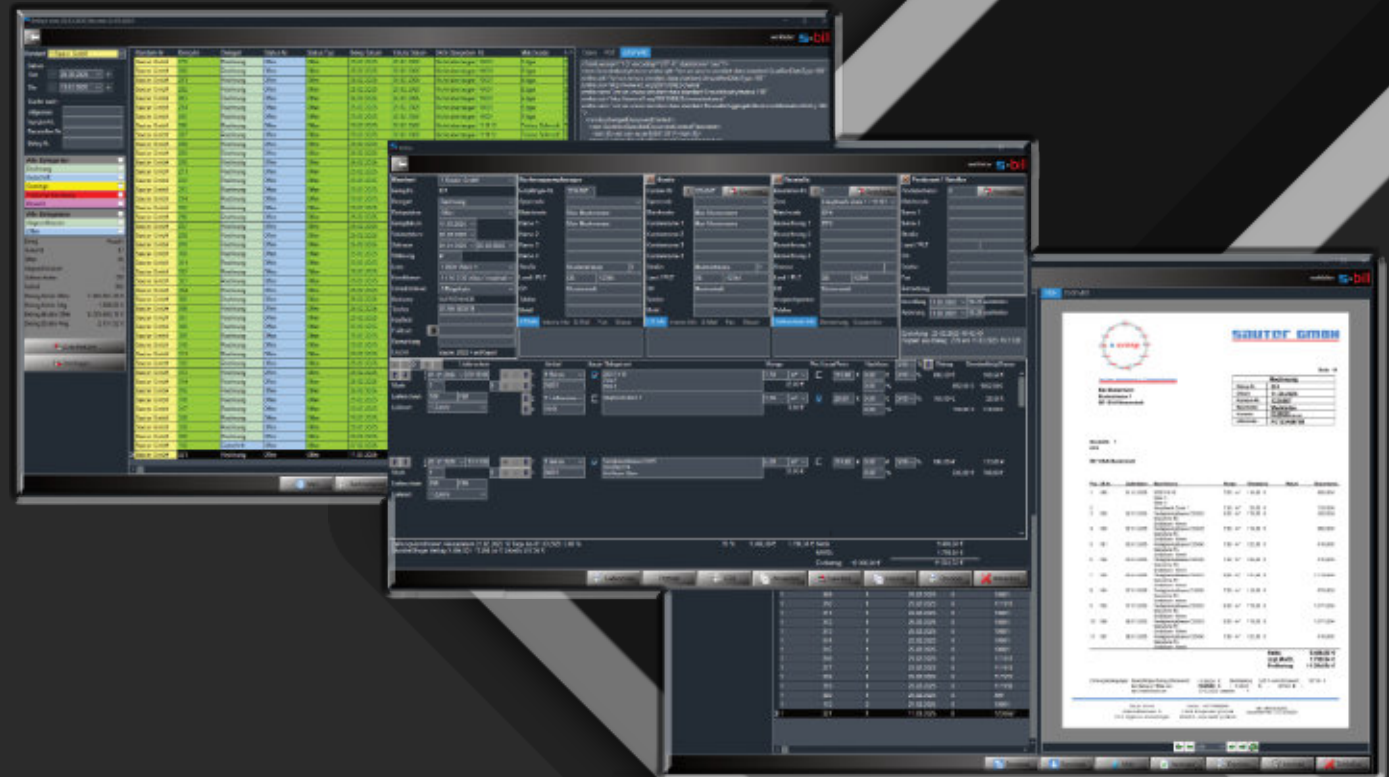
From structured article management to quotations and invoicing, everything is possible with **S-bill**.

Interfaces are available for data exchange.



## Key functions :

- multi-client capable
- article management
- preparation of offers
- price lists and calculation
- order confirmation
- document and invoicing
- collective printing
- e-mail dispatch
- credit note
- can be supplemented with the **S-web** portal and the **S-edoc** app
- communication with fibu systems
- e-invoice / ZUGFeRD



# **S-web** Web portal

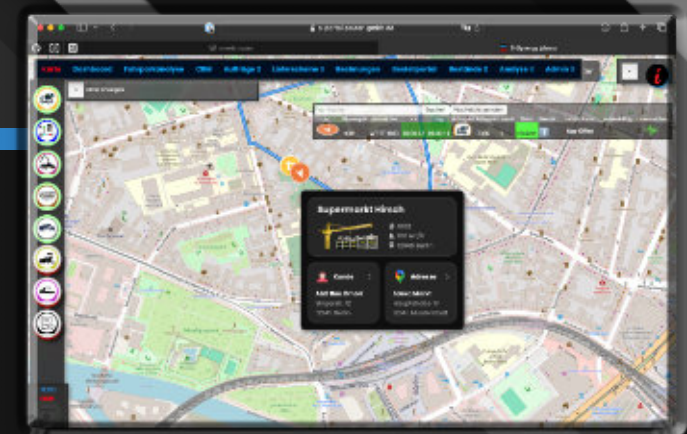
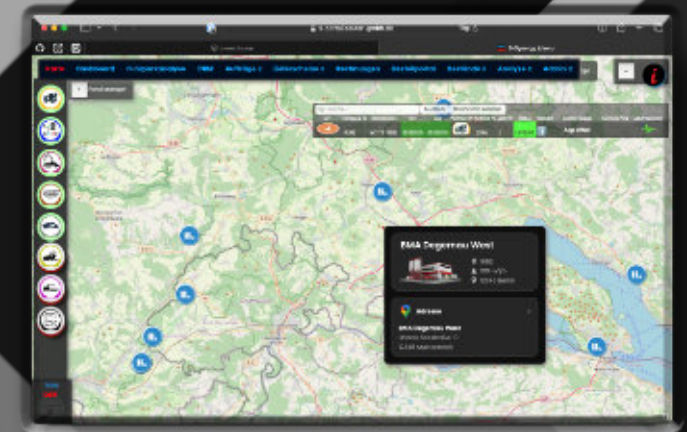


The **S-web** portal from Sauter GmbH, you and your customers can keep an overview of the important processes.

Regardless of the platform, **S-web** allows you to create high added value for your company and your customers.

## Key functions :

- access directly via URL from PC or tablet
- customer and delivery data portal
- modular and scalable according to your needs
- fleet management with live tracking on a clear map
- analyzing and tracking the fleet
- CRM for your sales organisation
- plant capacity utilization and order overview
- delivery note and invoice portal with print and download function
- order portal and delivery status
- raw material control in real time
- analysis for your QM
- always up to date with new features







# Innovative apps for the concrete industry

Efficiency and digitalization with mobile  
applications from the **s-app-family**



**s-track**

**s-edoc**

**s-scale+**

**s-sign**

**s-lab+**

**s-companion**





**S-track**

## App for vehicle location



Real-time tracking of vehicles, order management, integration into other **S-systems**

### Key functions :

- vehicle status in real time
- vehicle fleet management
- avoidance of empty journeys
- information messages to the driver
- feedback on the concrete quality to the dispatcher
- paperless delivery note
- daily report and driving time monitoring





# **5-scale +** App for mobile truck scales and general cargo loading

App for your wheel loader

## Key functions :

- transfer loading orders from the dispatcher directly to the wheel loader
- overview of all active loading processes in a yard list
- delivery note printout possible directly in the wheel loader
- simple and precise weighing
- delivery notes directly into the invoice





# App for mobile management of delivery notes and invoices



App for your customers' mobile devices for Android and iOS

## Key functions :

- delivery notes and invoices in PDF format
- invoices in PDF format with the option of sending by e-mail
- digital (contactless) signature of delivery notes
- overview of invoice status or open invoices
- delivery note and invoice overview in real time with delivery status





## Key functions :

- 

[illegible]



# **S-lab+** App for the concrete laboratory



App for your concrete technologist's mobile device  
for Android and iOS

## Key functions :

- all delivery notes / batch protocols available in the app as PDF
- digitally record fresh, hardened concrete & SCC test procedures according to standard specifications
- easily access data at any time on the mobile app or on the desktop in the office
- global overview of plant utilization
- multi-client capability for third-party laboratories



# S-companion

## Your mixing system in your pocket

App for the mobile device of your plant employees  
for Android and iOS

Access your production data from  
anywhere and control your system  
efficiently – directly from your mobile device.

### Key functions :

- overview of the production process in your plant
- concrete call-off directly from smartphone or tablet
- control and overview of material fill levels
- full control over the mixing process at all times thanks to immediate reaction to error messages



# S-cloud Cloud server



**S-CLOUD**  
IT-Infrastruktur  
aus der Cloud

Hochverfügbares Rechenzentrum  
in der Schweiz und Deutschland 

Private Cloud - für Ihre Sicherheit  
DSGVO/DVO Konform

Cluster-Lösungen für sicheren Datenzugriff

Skalierbare Leistungen

Full Managed Service

Abgetrenntes Netzwerk für Webservice

Auf Sauter-Software abgestimmt

VPN für sicheren Zugriff auf Ihre Cloud

**Weitere Leistungen**

- WebServices
- Webcloud
- Private Cloud
- IT-Support
- Security
- Reliable Workflows
- Mobile Device Management
- Angabe Clouds und Infrastruktur

**Sauter GmbH**  
Königsplatz 10  
90402 Nürnberg  
Tel.: +49 (0) 911 3030  
Fax: +49 (0) 911 3030  
www.sauter-gmbh.de

**Cooperation  
with Connect**

**E. Kunz AG**  
Königsplatz 10  
90402 Nürnberg  
Tel.: +49 (0) 911 3030  
Fax: +49 (0) 911 3030  
www.kunz-ag.de



Server locations : Nuremberg and Zurich

With **S-cloud**, we offer you a customised, secure and powerful cloud infrastructure that is specifically tailored to the needs of your company.

Benefit from flexible and efficient data management in your own private cloud that offers you full control and security.

Whether for the storage of sensitive company data, the optimization of business processes or the integration of modern IT solutions – with **S-cloud**, all options are open to you.

# S-api

## Interface to external systems

Our API enables seamless communication with third-party systems and the secure, efficient exchange of data.

With simple integration, high security and flexibility, you can expand your systems effortlessly.

Optimize your processes with a scalable solution that is precisely tailored to your needs.

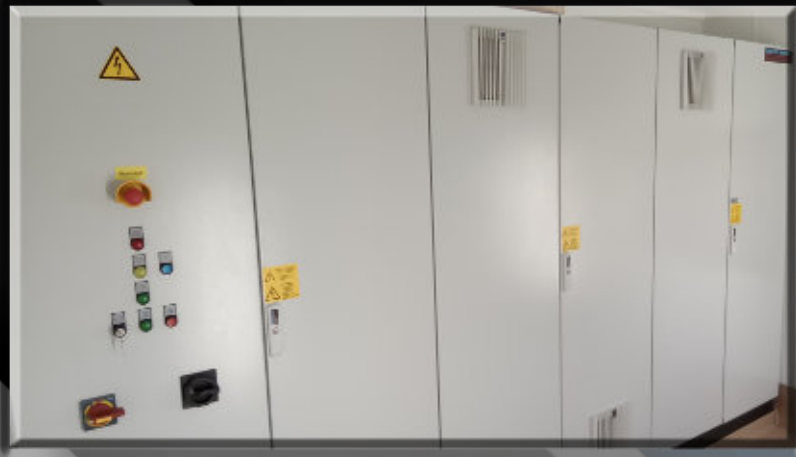
### Key functions :

- industry standard
- access control
- simple integration
- optimized communication





# Perfect solutions through planning and control cabinet construction



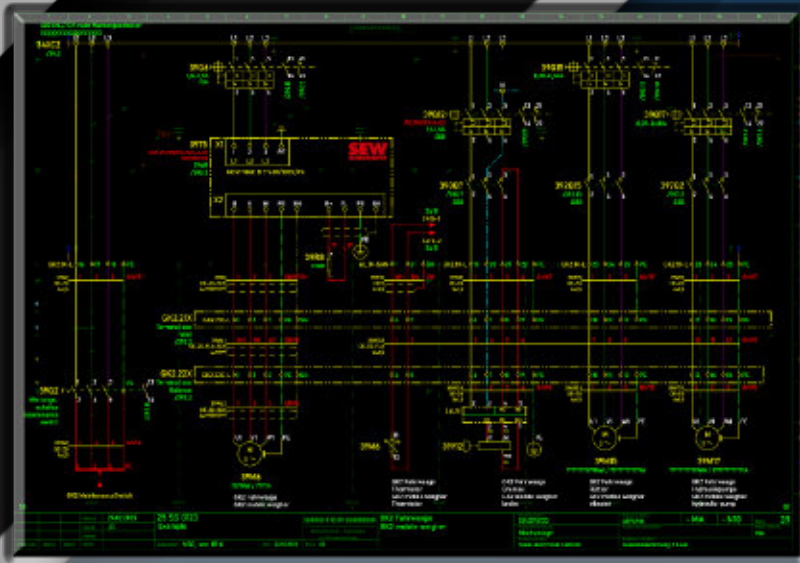
Sauter GmbH offers you customized control cabinet solutions, which are realized through close cooperation between our planning and engineering department and our experts in control cabinet construction.

We combine precise planning with innovative switch cabinet construction.

This results in solutions that are perfectly customized to your specific requirements.

Whether for mechanical engineering, automation or complex plant technology:

From the initial concept to the finished installation, we ensure that all components work smoothly.



# All-round service from one source

As a service provider, we offer a comprehensive and efficient all-round service from our experienced employees in addition to our wide range of software products.

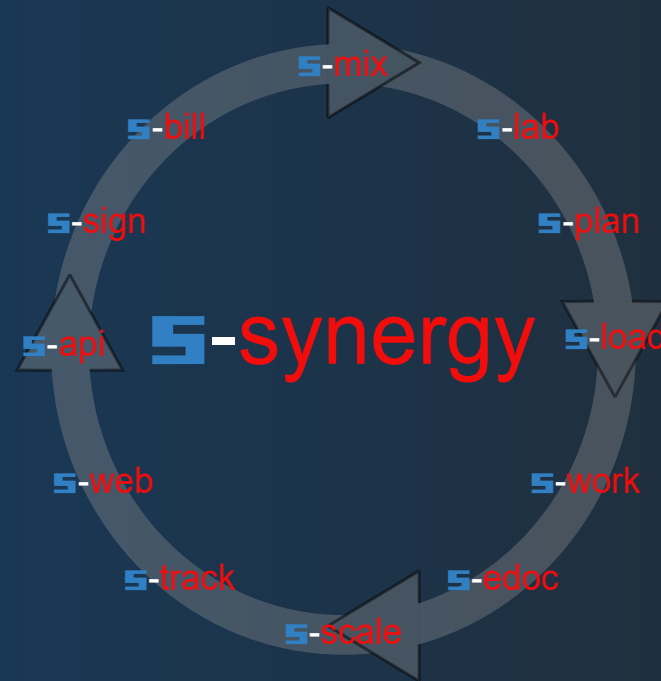
## Key functions :

- project consulting
- detailed plant survey including analysis of the current status
- project-specific planning and engineering
- production
- commissioning and adjustment
- customer training and support during production
- helpdesk hotline



You can rely on perfect cooperation –  
for the successful and smooth  
realization of your projects!

# SAUTER GMBH



Untere Mühlewiesen 14  
Phone : +49 7746 9230-0  
[www.sauter-gmbh.de](http://www.sauter-gmbh.de)

79793 Wutöschingen-Degernau  
E-Mail : [info@sauter-gmbh.de](mailto:info@sauter-gmbh.de)